

# Rainforests

## Year 3 / 4 Geography (Cycle B) - Rainforests









### Geographical Concepts

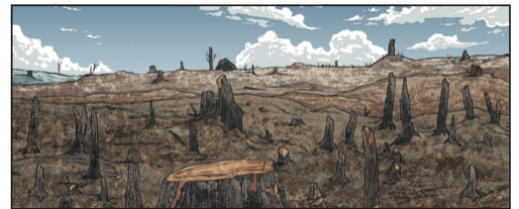
|                  |  |
|------------------|--|
| <b>Landscape</b> | All the visible features of an area of land.               |
| <b>Climate</b>   | The average weather conditions over a long period of time. |

### Core Vocabulary

|                      |  |
|----------------------|--|
| <b>Deforestation</b> | The cutting down and clearing of forests by humans.        |
| <b>Equator</b>       | An imaginary circle running round the centre of the earth. |
| <b>Humid</b>         | Feeling very damp due to water vapour in the air.          |
| <b>Native tribes</b> | The original settlers of an area.                          |

### Images

| Emergent Layer  | Canopy Layer  | Understorey Layer   | Forest Floor  |
|---|---|---|---|
|    |    |    |    |
| Trees can be up to 60m tall   | Trees form a roof over the plants below   | Trees grow to less than 4m tall   | Very few plants   |
| Lots of sunlight  | Lots of sunlight but also plenty of rain  | Very little sunlight  | Almost no sunlight  |
| Cold and windy  | Lots of food for animals  | Warm and <b>humid</b>   | Leaves and debris decompose quickly   |
| Birds, bats, monkeys and butterflies  | Snakes, toucans and tree frogs  | Lots of insects   | Gorillas, anteaters, leopards and tigers  |
|  |  |  |  |



### Key Knowledge

|   |   |
|---|---|
| 1 | Rainforests are a hot dense forest, because of the high rainfall they get each year. Rainforests can be found near the Equator, between the Tropic of Cancer and Tropic of Capricorn. Most rainforests are on the continents of South America, Africa and Asia. |
| 2 | There are thousands of types of plants and species that grow in the rainforests including trees, vines, flowers and mosses.   |
| 3 | There are four layers (stratas) of vegetation including the emergent layer, the canopy, the under storey and the forest floor. Each strata has different temperatures, humidity and sunshine levels and is home to different types of animals.                  |
| 4 | The climate is wet, hot and humid- perfect for plant growth. Rain falls almost everyday in the rainforest. There are only two seasons- wet and dry.   |
| 5 | The rainforests are home to many tribes of people including the Yanomami Tribe in the Amazon rainforest.  |
| 6 | Threats to the rainforest include deforestation, using 'slash and burn' to clear areas for farming and mining.  |

### Maps

